

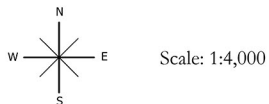
Rock Point Trails Map

Rock Point Trails

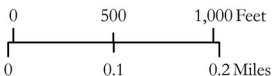
- Bike Path Access
- Trail Connector
- Ely Universal Access
- Holy Trinity Trail
- Thrust Fault Trail
- Sunset Ridge Trail
- Lone Rock Point Trail
- Marsh Beach Trail

Trail Features

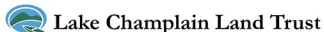
- Kiosk
- Directional Signage
- Lookout/View
- Burlington Bike Path
- Public Road



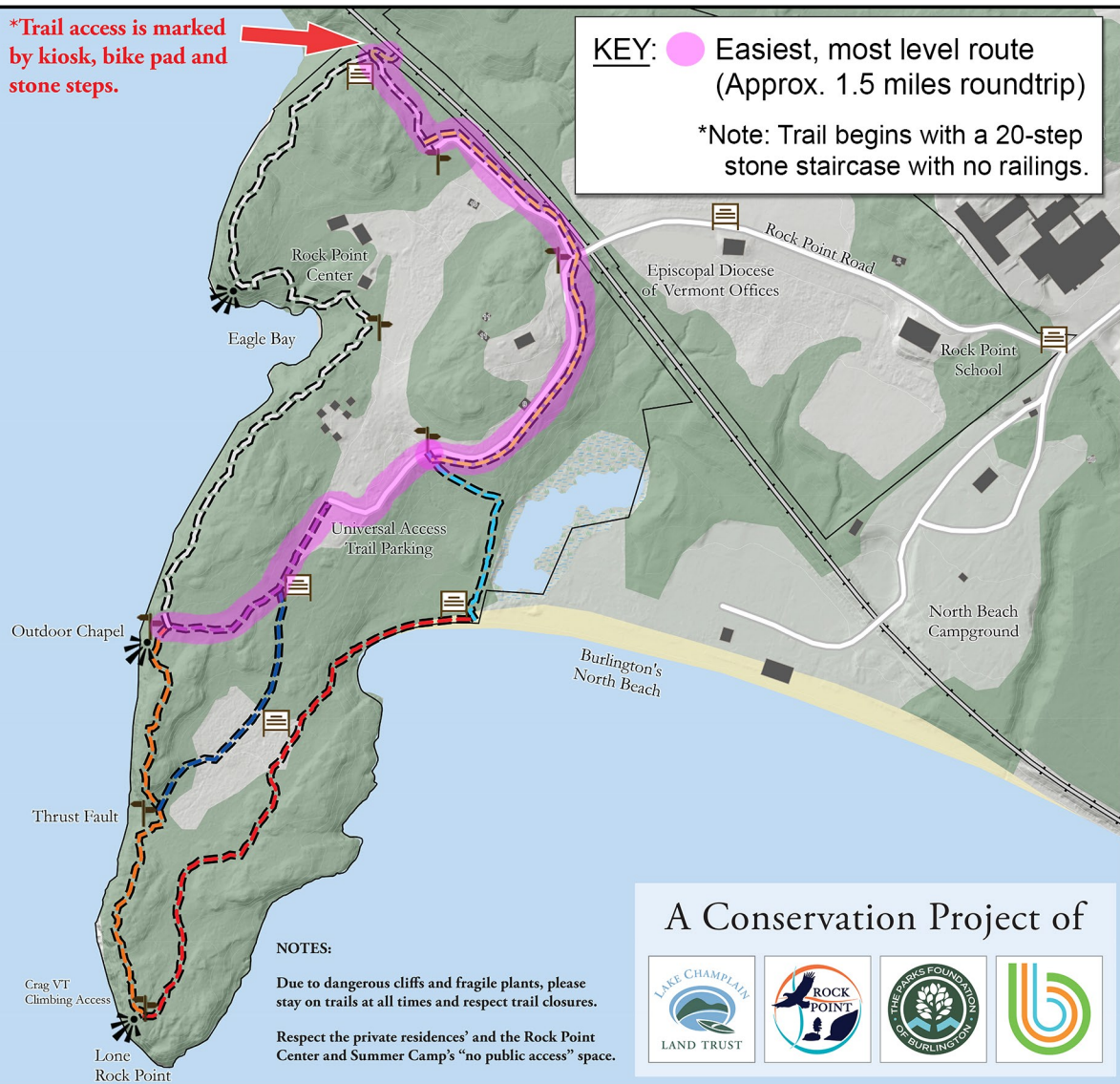
Scale: 1:4,000



Map Courtesy of the



*Trail access is marked by kiosk, bike pad and stone steps.



KEY: Easiest, most level route (Approx. 1.5 miles roundtrip)

*Note: Trail begins with a 20-step stone staircase with no railings.

NOTES:

Due to dangerous cliffs and fragile plants, please stay on trails at all times and respect trail closures.

Respect the private residences' and the Rock Point Center and Summer Camp's "no public access" space.

A Conservation Project of

