



# Goodsell Ridge Fossil Preserve Outdoor Classroom

Located in scenic and historic Isle La Motte, Vermont



## An Inspirational Learning Environment

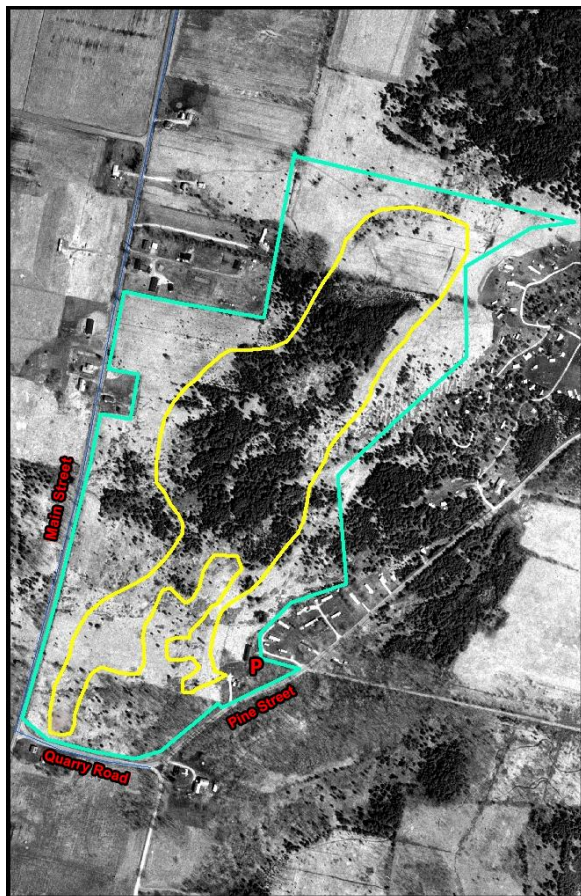
- One of the oldest fossil reefs in the world – 480 million years old!
- Educational “Walk Through Time” outdoor exhibit.
- Self-guided learning stations point out significant fossil features.
- Gentle trail system winds through hardwood and softwood forests as well as open fields.
- Well-marked trails and large kiosk sign in the parking lot to help orient visitors to the property.
- Interpretive center open seasonally. (Note: Call our partners at the Isle La Motte Preservation Trust for center hours: 802-238-7040).



## Directions

From the South: Take Exit 17 off of I-89 and get on US Route 2 W toward the Champlain Islands. After crossing the bridge between North Hero and Alburgh, look for Route 129 on your left. Follow Route 129 to Isle La Motte. This road then becomes Main Road. Follow until you see Quarry Road and the Historical Society on your left. Take Quarry Road for a quarter of a mile. You will see a large brown and white sign for Goodsell Ridge Preserve on the left. Pull into the driveway and park on the grass or along the driveway.

## What to Bring



### From Home

- Bagged Lunches
- Sunscreen, Hat and Insect Repellent
- Comfortable shoes
- Water Bottles

### From School

- Magnifying Glasses
- First Aid Kit
- Field Guides of Native Plants
- Clipboards, Paper and Pencils for sketching

