

# Upper La Platte River Natural Area

Shelburne, Vermont



Located on the edge of Shelburne Village, the Upper La Platte River Natural Area is a beautiful 65-acre property that includes 2/3 rds of a mile of river shoreline and several public walking trails.

Conserved in partnership with landowner Vermont Zen Center, the Upper La Platte River Natural Area contains critical wildlife habitat in mature northern hardwood and hemlock forests, agricultural fields, an active sugarbush and flood-absorbing wetlands. The parcel also provides protection of the state endangered Stonecat fish (*Noturus flavus*), which has only been found in two locations in Vermont.

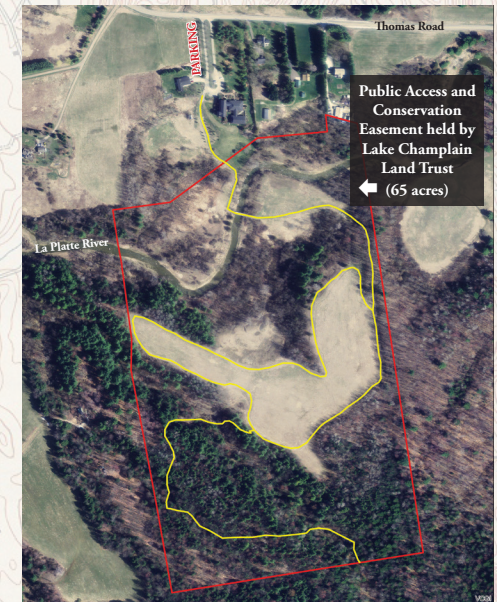


In addition, as the La Platte River empties into Lake Champlain's Shelburne Bay less than two miles away, this undeveloped riverside buffer will continue to help protect the Lake's water quality—of particular importance for the 60,000+ residents who rely on drinking water from Shelburne Bay.

## Directions and Park Information:

From downtown Burlington, take Rt. 7 south approx. 9 miles. From Shelburne Village follow Route 7 south past Shelburne Museum to the light at the top of the hill, turn left (east) onto Marsett Road. Follow straight through a stop sign (now Falls Road) until just after the bridge over the La Platte River Waterfalls; turn right immediately after the bridge onto Thomas Road. Follow Thomas Road up the hill and after it bends east, turn into the first marked driveway entrance of the Vermont Zen Center (480 Thomas Road). Find marked parking spot within the Center's parking area and follow trail signs to the beginning of the trail.

The Natural area is owned and managed by the Vermont Zen Center. Open dawn to dusk. No dogs, motorized recreation, horseback riding, or camping is allowed. There are no facilities. Upper La Platte River Natural Area is perfect for a family hike, picnic, cross-country ski or snowshoe.



Upper La Platte River Natural Area is one of dozens of properties saved by the Lake Champlain Land Trust. Since 1978, the Lake Champlain Land Trust has conserved over 7,000 acres and 19 miles of lake and river shoreline. To help us save more natural areas, please donate through our website [www.LCLT.org](http://www.LCLT.org)!

One Main Street, Suite 205

Burlington, Vermont 05401

802-862-4150

[www.LCLT.org](http://www.LCLT.org)