



# Goodsell Ridge Fossil Preserve Outdoor Classroom



Located in Isle La Motte, a historic location in Grand Isle County

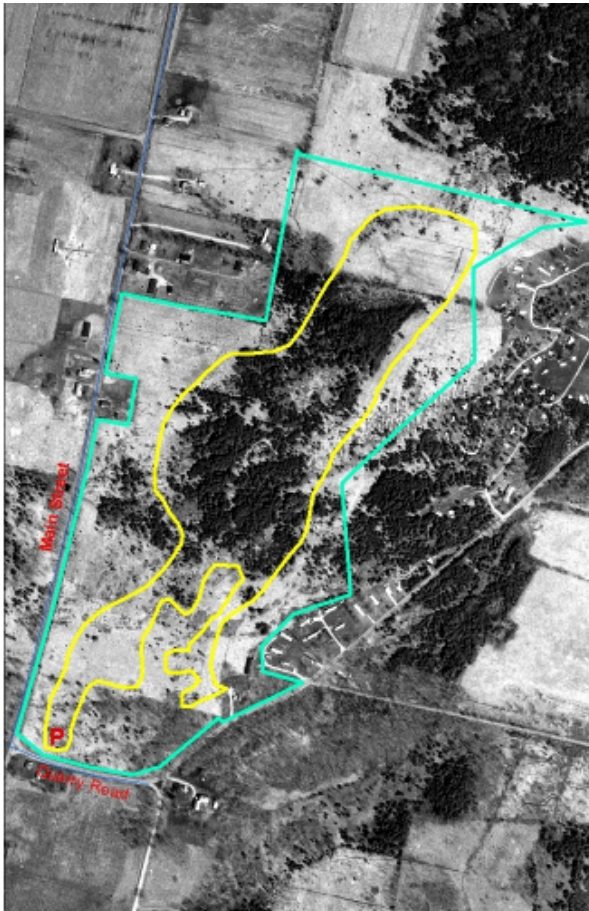
## Inspirational Learning Environment

- One of the oldest fossil reefs in the world – 480 million years old!
- Self-guided learning stations set-up to point out significant fossil features
- Trail system that goes through hardwood and softwood forests as well as open fields
- Well mapped trails and large kiosk sign in the parking lot to help orient you to the property
- Seasonal facilities



## Directions

From the South: Get off I-89 at exit 17 and onto Route 2W. Just after crossing the bridge into Alburgh, turn left onto Route 129. Continue for just over 7 miles, Route 129 will turn into Main Street, and then turn left onto Quarry Road, (which is just before the Historical Society). Parking lot is ¼ of a mile down the road on the left near an old farmhouse.



## What to Bring

### From Home

- Bagged Lunch
- Sunscreen and Insect Repellant
- Notepad
- Water Bottle

### From School

- Magnifying Glass
- Field Guides
- First Aid Kit
- Clipboards and pencils

