

Landon Community Trail

South Hero, Vermont



Located across the road from Round Pond State Park, the Landon Community Trail opened to the public in the fall of 2010. In 2001, the South Hero Land Trust, Lake Champlain Land Trust, Vermont Land Trust and the Nature Conservancy raised funds to acquire the historic Landon Farm. Once the property was purchased, it was permanently conserved as the Round Pond State Park and a new family farm owned by Erik Wells and Annette Burger.

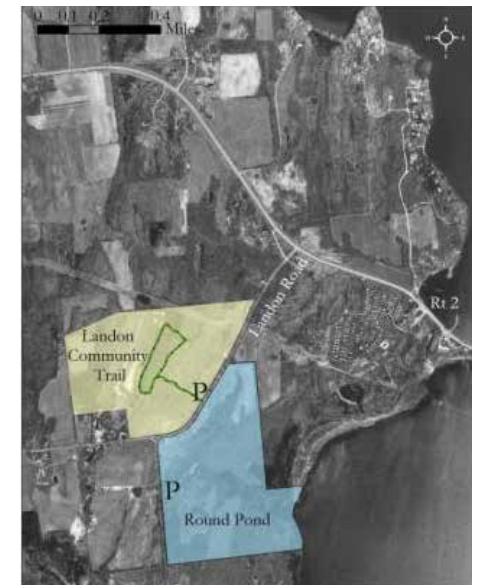
Two of the land trusts, South Hero Land Trust and Lake Champlain Land Trust, worked in close partnership to raise additional funds to create a unique public access trail on a private farm. Thanks to the dedicated scores of volunteers who helped create a major trail in and around a working farm, visitors can enjoy magnificent vistas on an easy trail loop.

The Landon Community Trail courses through a mixture of open farm fields and wooded areas. Providing habitat for many plants and animals, it is part of a larger mixed habitat area. It is a fun, beautiful, and historic place to go for a hike, snowshoe, picnic, or a bird-watching adventure!

Directions and Park Information:

Take Exit 17 off of Interstate-89 to Route 2 West towards the Islands. Take first left in South Hero onto Landon Road. Follow Landon Road for about 1/4 mile, then look for a small parking area on the right.

PLEASE NOTE: The Landon Community Trail will be closed during major hunting seasons.



Landon Community Trail is one of dozens of properties saved by the Lake Champlain Land Trust. Since 1978, the Lake Champlain Land Trust has preserved thousands of acres and miles of shoreline on Lake Champlain. To help us save more irreplaceable natural areas, please donate through our website www.LCLT.org!

One Main Street, Suite 205

Burlington, Vermont 05401

802-862-4150

www.LCLT.org